

Flat B, Block
4 Grove Road
Mitcham
CR4 1SA



T₂m

Flat B, Block 4 Grove Road £250,000



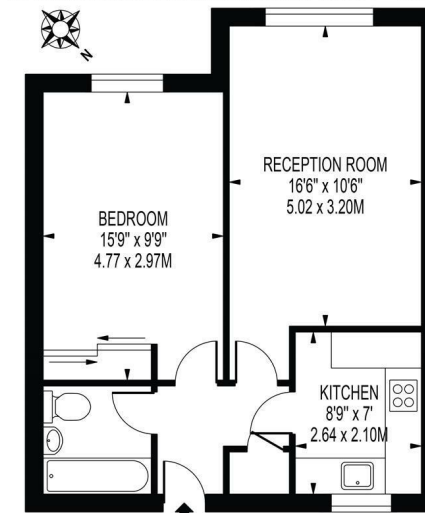
Contact
02086405955
www.time2move.com

Local Authority
London Borough of Merton

Council Tax Band B

EPC Rating

MAYTREE COURT APPROXIMATE GROSS INTERNAL FLOOR AREA: 492 SQ FT - 45.73 SQ M



GROUND FLOOR
FOR ILLUSTRATION PURPOSES ONLY
THIS FLOOR PLAN SHOULD BE USED AS A GENERAL GUIDE FOR GUIDANCE ONLY AND DOES NOT CONSTITUTE AN OFFER OR CONTRACT.
ANY INTENDING PURCHASER OR LESSEE SHOULD SATISFY THEMSELVES BY INSPECTION, SURVEY, ENQUIRIES AND FULL SURVEY AS TO THE CORRECTNESS OF EACH STATEMENT.
ANY AREAL MEASUREMENTS OR DISTANCES QUOTED ARE APPROXIMATE AND SHOULD NOT BE USED TO VALUE A PROPERTY OR BE THE BASIS OF ANY SALE OR LET.